

STUA

TECHNICAL TEXTILES
TELAS TÉCNICAS

CAMIRA
KVADRAT
VESCO

Valid for all designs
Válidas para todos los diseños

stua.com

Camira. 100% Natural



G1
CAMIRA MAIN LINE FLAX 20
FAM020



G1
CAMIRA MAIN LINE FLAX 60
FAM060



G1
CAMIRA MAIN LINE FLAX 15
FAM015



G1
CAMIRA MAIN LINE FLAX 02
FAM002



G1
CAMIRA MAIN LINE FLAX 26
FAM026



G1
CAMIRA MAIN LINE FLAX 16
FAM016

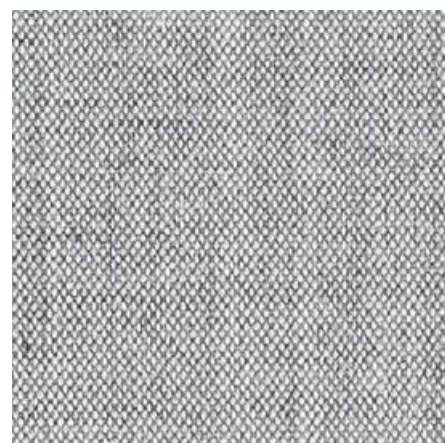
Kvadrat. Classics



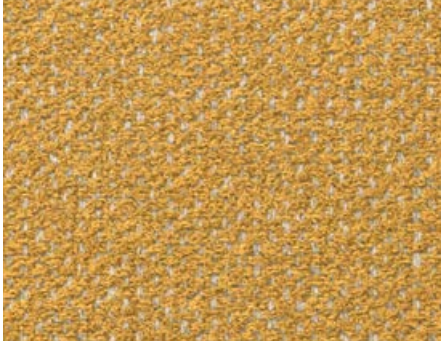
G4
KVADRAT STEELCUT TRIO 213
FKS213



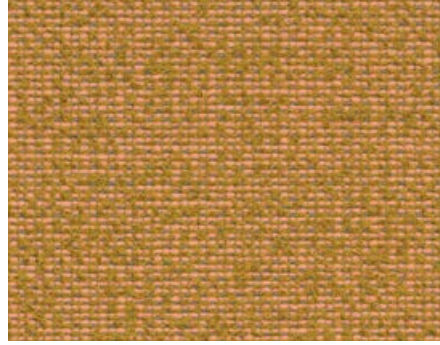
G4
KVADRAT DIVINA MELANGE 120
FKD120



G2
KVADRAT REMIX 123
FKR123



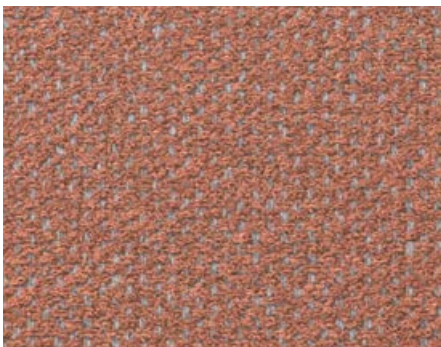
G2
VESCOM FOSTER 1
FEF001



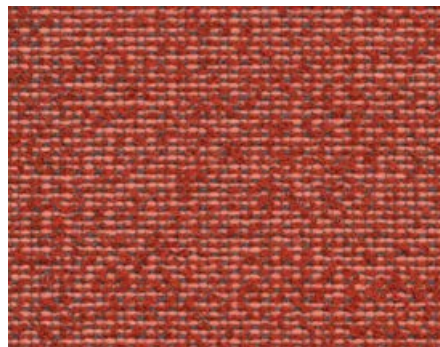
G2
VESCOM AUCKLAND 19
FEA019



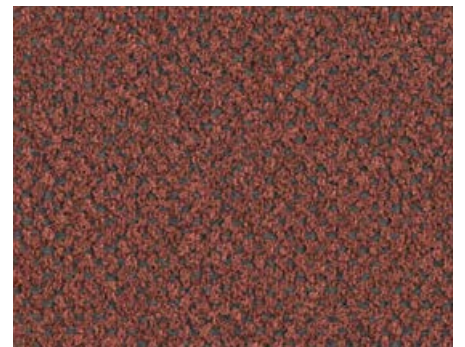
G2
VESCOM FOSTER 2
FEF002



G2
VESCOM FOSTER 7
FEF007



G2
VESCOM AUCKLAND 33
FEA033



G2
VESCOM FOSTER 11
FEF011



G2
VESCOM FOSTER 15
FEF015



G2
VESCOM NORFOLK 5
FEN005



G2
VESCOM FOSTER 3
FEF003



G2
VESCOM FOSTER 21
FEF021



G2
VESCOM AUCKLAND 4
FEA004



G2
VESCOM NORFOLK 9
FEN009

CAMIRA MAIN LINE FLAX

Composition	75% Virgin Wool 25% Flax
Usable width	140 cm.
Weight	612 gr/m
Abrasion resistance	>50.000 martindale 10 years guarantee
Fire resistance	BS 5852 - Crib 5 EN 1021 - 1/2 US Cal. Bull. 117-2013



ENVIRONMENTAL ASPECTS

Made in the UK

100% Made from natural wool and plant fibre, so they are free of PFAS or any chemical harmful substance.

EU Ecolabel, official environmental excellence.

Indoor Advantage Gold

REACH. Registration, Evaluation, Authorisation and Restriction of Chemicals.

Renewable & compostable

CAMIRA MAIN LINE FLAX CLEANING

Vacuum clean regularly.

Wipe with a damp cloth using a proprietary upholstery shampoo/soap.

For deeper cleaning use steam or professionally dry clean.



KVADRAT REMIX

Designer	Giulio Ridolfo
Composition	90% New wool worsted 10% Nylon
Usable width	140 cm.
Weight	420 gr/m
Abrasion resistance	100.000 martindale
Fire resistance	BS 5852 - Part. 1 EN 1021 - 1/2 US Cal. Bull. 117-2013



KVADRAT STEELCUT TRIO

Designer	Frans Dijkmeijer & Giulio Ridolfo
Composition	90% New wool worsted 10% Nylon
Usable width	140 cm.
Weight	770 gr/m
Abrasion resistance	100.000 martindale
Fire resistance	BS 5852 - Part. 1 EN 1021-1/2 US Cal. Bull. 117-2013



KVADRAT DIVINA MELANGE

Designer	Finn Sködt
Composition	100% New wool
Usable width	150 cm.
Weight	840 gr/m
Abrasion resistance	45.000 martindale
Fire resistance	BS 5852 - Part. 1 EN 1021-1/2 US Cal. Bull. 117-2013



ENVIRONMENTAL ASPECTS

Made in the UK.

EU Ecolabel, official environmental excellence.

REACH. Registration, Evaluation, Authorisation and Restriction of Chemicals.

Greenguard Gold, very low chemical emissions.

PFAS free, harmful substances and pollutants.

KVADRAT TEXTILES CLEANING

Vacuum clean regularly.

Remove stains as soon as they occur, with clean warm water or sparkling water.

Extraction cleaning might dissolve glue. Be careful with temperature and amount of detergent.



VESCOM FOSTER



Composition	97% recycled polyester FR 3% polyester FR
Usable width	141 cm.
Weight	749 gr/m
Abrasion resistance	100.000 martindale
Fire resistance	BS 5852 - Part. 1 EN 1021 - 1/2 US Cal. Bull. 117-2013



VESCOM AUCKLAND



Composition	76% recycled polyester FR 24% polyester FR
Usable width	141 cm.
Weight	704 gr/m
Abrasion resistance	80.000 martindale
Fire resistance	BS 5852 - Part. 1 EN 1021-1/2 US Cal. Bull. 117-2013



VESCOM NORFOLK



Composition	100% recycled polyester FR
Usable width	148 cm.
Weight	624 gr/m
Abrasion resistance	70.000 martindale
Fire resistance	BS 5852 - Part. 1 EN 1021-1/2 US Cal. Bull. 117-2013



ENVIRONMENTAL ASPECTS



Made in Germany.

Textiles made with 76% - 100% recycled polyester, made with used plastic bottles.

1 m Foster = 49 plastic bottles

1 m Auckland = 36 plastic bottles

1 m Norfolk = 42 plastic bottles

Oeko-Tex Standard 100, the best-known label for textiles tested for harmful substances.

PFAS free, harmful substances and pollutants.

VESCOM TEXTILES CLEANING

Remove stains as soon as they occur.

FR polyester upholstery fabrics are easy to clean with water. Washing this fabric with water does not remove its flame retardant properties. The fabrics dry quickly and do not lose their shape.



For more information, download the technical data sheet of each fabric at: www.stua.com/downloads

Para más información, descargue la ficha técnica de cada tela en: www.stua.com/es/descargas